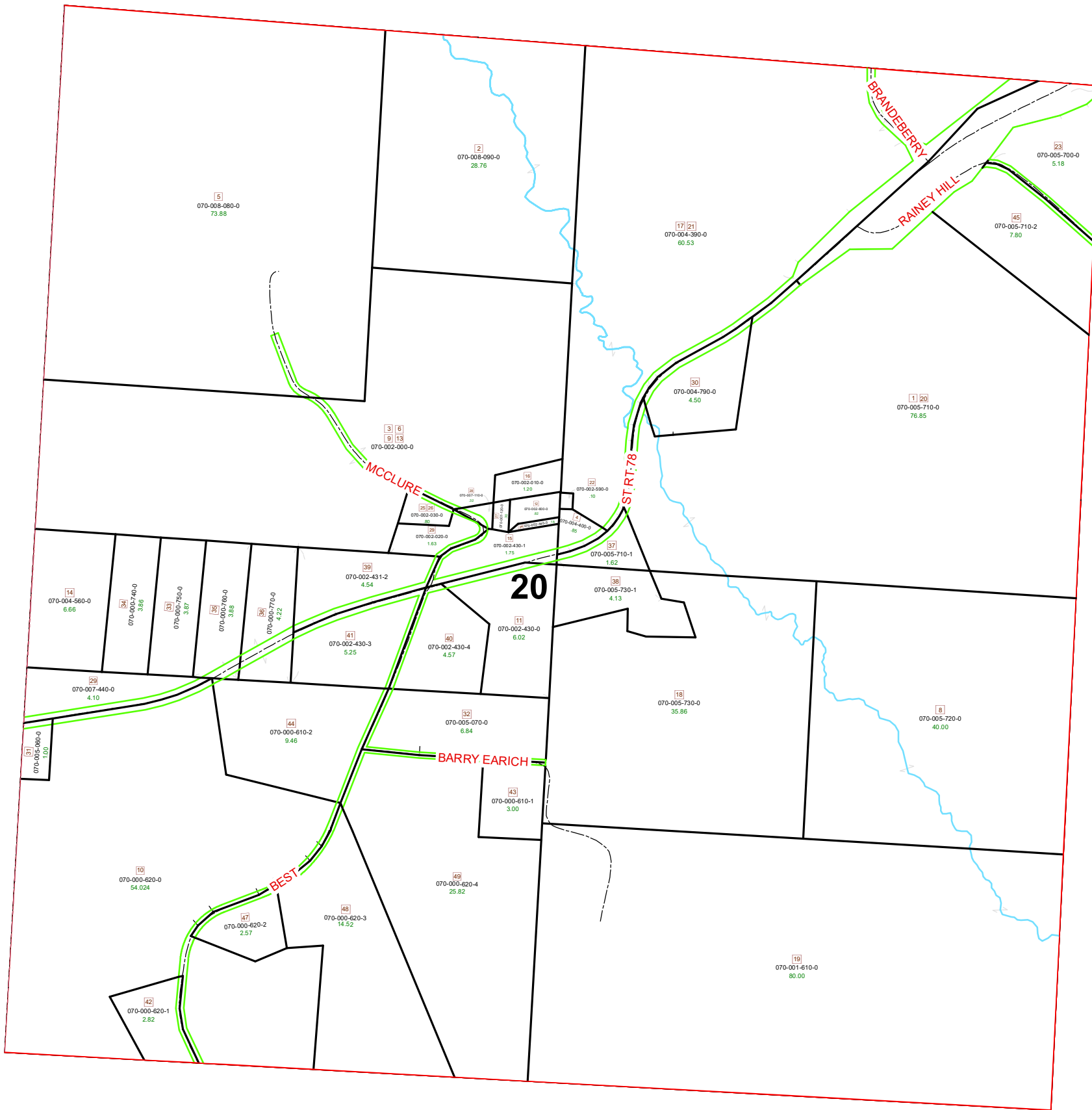
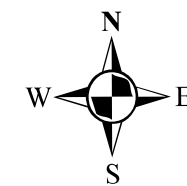


MALTA TOWNSHIP SECTION 20 R-12 TWP-10 MORGAN COUNTY, OH



PIN	VOL	PAG	Owner	LegalDescr	Acres
070-005-700-0	OR206	1754	BIGART DAVID L & MARY ANNA RANEY	BI R12 T10 S20 SD 23 SU	5.186
070-000-620-1	D.V	193	496 BRANNON JAMES B & KIM S	R12 T10 S20 SD 42 SU	2.827
070-000-620-0	OR223	2170	BRANNON JAMES B & KIMBERLY S	R12 T10 S20 SD 10	54.024
070-002-010-0	D.V	201	91 DRAKE RAYMOND L JR & AMY L	R12 T10 S20 SD 16 SU	1.2
070-002-000-0	D.V	201	89 DRAKE RAYMOND L JR & AMY L	R12 T10 S20 SD 3-6-9-	58.18
070-001-610-0	D.V	203	775 EARICH BARRY L	R12 T10 S20 SD 19	80
070-000-620-2	OR223	2161	HARDMAN KELLY & VICKI SAYATOVICH &	R12 T10 S20 SD 47	2.57
070-005-710-2	OR212	546	HILL GLORIA J	R12 T10 S20 SD 45	7.762
070-002-430-3	D.V	190	756 HOSTETLER DUANE & ANNA MAE	R12 T10 S20 SD 41	5.254
070-002-430-4	OR216	885	HOSTETLER DUANE & ANNA MAE	R12 T10 S20 SD 40 SU	4.573
070-004-790-0	OR216	3019	HUFFMAN GLORIA A & ROBERT W	R12 T10 S20 SD 30 SU	4.504
070-000-760-0	OR206	321	KIDD ROBERT A & JAN S	R12 T10 S20 SD 35 SU	3.88
070-000-750-0	OR222	1693	KIDD ROBERT ALAN & JANET SUE	R12 T10 S20 SD 33 SU	3.874
070-000-740-0	OR222	1693	KIDD ROBERT ALAN & JANET SUE	R12 T10 S20 SD 34 SU	3.868
070-002-590-0	OR211	3039	MASSEY WILLIAM M & JANICE K	R12 T10 S20 SD 22	0.125
070-004-400-0	D.V	146	604 MASSEY WILLIAM M & JANICE K	R12 T10 S20 SD 4 SUR	0.85
070-004-390-0	D.V	146	604 MASSEY WILLIAM M & JANICE K	R12 T10 S20 SD 17-21	60.53
070-004-560-0	OR175	796	MCCONKEY SR 78 HOME FARM LTD	R12 T10 S20 SD 14	6.66
070-005-720-0	OR233	2204	MILLER ALLEN I ET4AL	R12 T10 S20 SD 8 1/2 I	40
070-005-730-0	OR233	2204	MILLER ALLEN I ET4AL	R12 T10 S20 SD 18 1/2	35.867
070-005-710-0	OR233	2204	MILLER ALLEN I ET4AL	R12 T10 S20 SD 1-20 1	76.851
070-000-610-2	OR217	2938	ROBERTS JASON T & MARY K	R12 T10 S20 SD 44 SU	9.465
070-002-430-0	D.V	203	455 ROBISON TED D & HINDMAN MELANIE A	R12 T10 S20 SD 11-15	6.027
070-000-620-3	OR223	2164	SAYATOVICH VICKI & TERRY	R12 T10 S20 SD 48	14.52
070-005-730-1	OR232	1375	SMITH BAYLEE J & JOSH R BARRERA	R12 T10 S20 SD 38	4.133
070-005-710-1	OR232	1375	SMITH BAYLEE J & JOSH R BARRERA	R12 T10 S20 SD 37	1.627
070-000-620-4	OR223	2167	SMITH BETH ANN & BRYAN	R12 T10 S20 SD 49 SU	25.82
070-000-610-1	D.V	205	218 SMITH BRYAN & BETH ANN	R12 T10 S20 SD 43 SU	3
070-005-070-0	OR34	336	SMITH BRYAN K & BETH A	R12 T10 S20 SD 32 SU	6.84
070-005-060-0	OR215	2294	TAYLOR DANA L	R12 T10 S20 SD 31	1
070-007-440-0	OR204	1974	VANHORN KAREN JENKINS	R12 T10 S20 SD 29	4.1
070-000-770-0	OR230	2609	WHITE THOMAS E & CINDA S	R12 T10 S20 SD 36 SU	4.228
070-002-431-2	OR232	3277	WHITE THOMAS E & CINDA S	R12 T10 S20 SD 46	4.541
070-007-120-0	OR200	464	YODER JONAS & ADA	R12 T10 S20 SD 27 SU	0.3
070-002-600-0	OR200	464	YODER JONAS & ADA	R12 T10 S20 SD 12	0.977
070-007-110-0	OR200	464	YODER JONAS & ADA	R12 T10 S20 SD 28 SU	0.323
070-002-430-1	OR211	1921	YODER JONAS S & ADA J	R12 T10 S20 SD 15	1.752
070-002-440-0	OR211	1921	YODER JONAS S & ADA J	R12 T10 S20 SD 24	0.184
070-002-030-0	OR211	1921	YODER JONAS S & ADA J	R12 T10 S20 SD 25-26	0.8
070-002-020-0	OR211	1921	YODER JONAS S & ADA J	R12 T10 S20 SD 29	1.633
070-008-090-0	OR223	2354	YODER REUBEN J & MARY LYNN	R12 T10 S20 SD 2 SUR	28.76
070-008-080-0	OR223	2354	YODER REUBEN J & MARY LYNN	R12 T10 S20 SD 5 SUR	73.88



Boundaries	
----- Hidden	----- ROW
----- Hydro	----- Section
----- Roads	----- Township
----- County	----- Parcel
----- Lot	----- Parcels



Disclaimer: The information that these maps contains is for reference purposes only. Please bring any erros to the attention of the Engineer's Office staff.

Thank you